



# lighting today

Volume 4 | October - December 2022

**Andreas Turm office building in Zurich**

This project showcases smart lighting for customised office areas. **p16**

ANDREAS TURM

coop



#### ON THE COVER

Andreasturm office building in Zurich.  
Photo credit: Faruk Pinjo

OTHER TITLES BY  
TRADE LINK MEDIA PTE LTD  
([www.tradelinkmedia.biz](http://www.tradelinkmedia.biz))

Bathroom + Kitchen Today  
Southeast Asia Building  
Southeast Asia Construction  
Security Solutions Today

#### CALL FOR SUBMISSIONS

Press releases, proposals for stories, and product development literature should be submitted by email to the editor at:  
[lighting@tradelinkmedia.com.sg](mailto:lighting@tradelinkmedia.com.sg)

ASSOCIATE PUBLISHER  
**Eric Ooi**  
[eric.ooi@tradelinkmedia.com.sg](mailto:eric.ooi@tradelinkmedia.com.sg)

EDITOR  
**Amita Natverlal**  
[lighting@tradelinkmedia.com.sg](mailto:lighting@tradelinkmedia.com.sg)

MARKETING MANAGER  
**Felix Ooi**  
[felix.ooi@tradelinkmedia.com.sg](mailto:felix.ooi@tradelinkmedia.com.sg)

HEAD OF GRAPHIC DEPARTMENT/  
ADVERTISEMENT COORDINATOR  
**Fawzeeah Yamin**  
[fawzeeah@tradelinkmedia.com.sg](mailto:fawzeeah@tradelinkmedia.com.sg)

CIRCULATIONS EXECUTIVE  
**Yvonne Ooi**  
[yvonne.ooi@tradelinkmedia.com.sg](mailto:yvonne.ooi@tradelinkmedia.com.sg)

#### LIGHTING TODAY IS PUBLISHED BY

TRADE LINK MEDIA PTE LTD  
101 Lorong 23 Geylang  
#06-04 Prosper House  
Singapore 388399

For interest in advertising and advertorials,  
please attention your query via:  
direct call: +65 6842 2580

ISSN 2345-7147 (Print) and  
ISSN 2345-7155 (E-periodical)

This publication is published four times a year and  
available on the digital platform.

To download a free digital copy,  
visit [lt.tradelinkmedia.biz](http://lt.tradelinkmedia.biz).

#### DISCLAIMER

All advertisers and contributors must ensure all promotional material and editorial information submitted for all our publications, must be free from any infringement on patent rights, copyrights laws in every jurisdiction. Failure of which, they must be fully liable and accountable for legal consequences (if any) that may arise.

The editor reserves all right to omit, amend or alter press releases submitted for publication. The publisher and editor are unable to accept any liability for errors or omissions that may occur in this process, although every effort has been taken to ensure that all information is correct at the time of going to press. Edited articles or stories are returned to contributors for check on facts at the sole discretion of the editor. No portion of this publication may be reproduced in whole or part without written permission of the publisher. The editor reserves all rights to exclude or refuse submissions at any time without prior written or verbal notice if contributing parties do not provide complete text and supporting images at a minimum of 300dpi in .jpeg and .tiff format.

#### VOL 1 / 2023 TOPICS

- **Architectural Lighting:** Commercial Projects (Retail, Offices, Shopping Malls)
- **Trends in Lighting:** Human-Centric Lighting
- **Spotlight:** Exclusive Lighting Designer Interview
- **Lighting Product Showcase:** Smart Lighting, Outdoor Lighting, Indoor Lighting, LED Lighting, Lamps / LED, Ballast / Transformers, Lighting Controls, Emergency / Exit

*Amita Natverlal*  
Editor

**16 - 18 November  
2022**

**Architecture & Building Services 2022** (see show ad on page 27)  
Sands Expo & Convention Centre, Singapore  
**Website:** <https://architecturebuildingservices.com.sg>

**25 - 27 January 2023**

**Light-Tech Expo**  
Tokyo International Exhibition Centre, Tokyo, Japan  
**Website:** <https://www.neventum.com/tradeshows/light-tech-expo>

**2 - 4 March 2023**

**INALIGHT 2023**  
JIExpo Kemayoran, Jakarta, Indonesia  
**Website:** <https://inalight-exhibition.net/upcoming-event/inalight-event-2023/>

**6 - 9 April 2023**

**Hong Kong International Lighting fair (Spring Edition)**  
Hong Kong Convention and Exhibition Centre, Hong Kong  
**Website:** <https://www.hktdc.com/event/hklightingfairse/en>

**18 - 23 April 2023**

**EuroLuce 2023**  
Fiera Milano, Milan, Italy  
**Website:** <https://www.salonemilano.it/en/exhibitions/euroluce>

**21 - 25 May 2023**

**LightFair 2023**  
The Javits Center, New York, NY USA  
**Website:** [www.lightfair.com](http://www.lightfair.com)

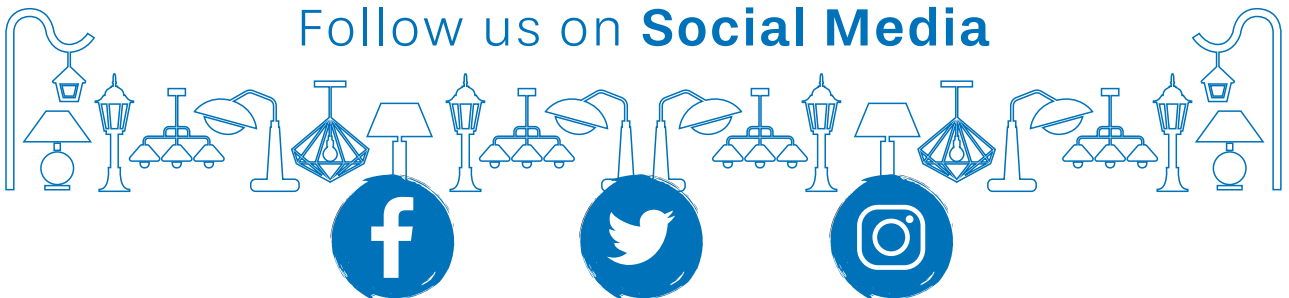
**9 - 12 June 2023**

**Guangzhou International Lighting Exhibition (GILE) 2023**  
China Import & Export Fair Complex, Guangzhou, China  
**Website:** <https://guangzhou-international-lighting-exhibition.hk.messefrankfurt.com/guangzhou/en.html>

**26 - 29 July 2023**

**ARCHIDEX 2023** (see show ad on page 28)  
Kuala Lumpur Convention Centre, Kuala Lumpur, Malaysia  
**Website:** <https://archidex.com.my>

Follow us on **Social Media**



[www.facebook.com/  
LightingToday](http://www.facebook.com/LightingToday)

[www.twitter.com/  
LightingToday](http://www.twitter.com/LightingToday)

[www.instagram.com/  
lightingtodaysg](http://www.instagram.com/lightingtodaysg)



*Chinese Foundation Secondary School in Hong Kong p12*



*Andreasturm office building in Zurich p16*

## ***contents***

---

### **03** EVENTS CALENDAR

### **05** LIGHTING IN THE NEWS

#### **ARCHITECTURAL LIGHTING - SUSTAINABILITY IN LIGHTING**

**12** Chinese Foundation Secondary School in Hong Kong

#### **SMART LIGHTING & IOT - SMART BUILDINGS**

**16** Andreasturm office building in Zurich

### **20** PRODUCT SHOWCASE

## Showlight 2023 – Calling all Showlight Exhibitors and Sponsors – it's time!

Fontainebleau, France – It's less than 10 months until Showlight 2023 and preparations are gathering pace for this premier networking event. This will be the first in-person Showlight for 6 years and excitement is building rapidly as plans are made and diaries blocked out.

### Exhibitors

Exhibitor stand bookings are underway with many confirmations already in place. The first exhibitors will be announced in the coming weeks. Those who wish to exhibit should contact John Allen at the soonest opportunity as places are limited and allocated on a first come, first served basis. Don't miss your chance to be an integral part of Showlight 2023!

### Sponsors

There are plenty of opportunities to become a Showlight sponsor – whether you choose to exhibit or not. Gold, Silver and Bronze sponsorships exist alongside specific sponsorship for aspects such as hospitality, transport, welcome drinks, speakers or students, and many more to suit all budgets – you could even suggest your own idea! Again, these sponsorship roles will be allocated on a first come, first served basis and all enquiries should be made to John Allen who will furnish the full details.



With Fontainebleau the location for Showlight 2023, it is especially fitting that the headline sponsor for this year is French lighting manufacturer, Robert Juliat. Showlight is also grateful to the following sponsors who are already in place: Platinum sponsor, Ayrton, Gold sponsors Eyetidy, Robe, SFL, Silver sponsors ABTT, ACT Entertainment, Altman, CAST, Christie Lites, White Light and Bronze sponsor, PRG. Showlight is proud to have LSi as its Media Partner and LSA as its Media

Supporter once more, and the support of PLASA.

Showlight only happens every 4 years, and is the most popular networking event for the lighting industry. Don't miss this opportunity to meet with lighting designers, manufacturers, students, technicians and lighting practitioners from all over the world, for three days in a single, beautiful setting.

For more information, visit [www.showlight.org](http://www.showlight.org).

## KOPTI joins the Zhaga Consortium

Piscataway, NJ, USA – The Korea Photonics Technology Institute (KOPTI) has become a Regular Member of the Zhaga Consortium. The research institute creates high value-added, environment friendly, highly efficient new technology related to photonic fields such as LEDs with global competitiveness.

KOPTI plans to promote Zhaga Books to Korean lighting manufacturers and related organisations. In addition, KOPTI intends to collect opinions from Korean lighting companies and their customers on developments in smart lighting and propose them to the Zhaga organisation.

“The Zhaga Consortium is very pleased to be joined by KOPTI,” states Dee Denteneer, Secretary General of the Zhaga Consortium and continues “we are a global lighting-industry organization that aims to standardize interfaces of components of LED luminaires. Our mission includes to actively share Zhaga specifications with global and regional standards development organizations with the goal of gaining increased global acceptance of the Zhaga specifications. We therefore look forward to the membership of KOPTI and jointly informing the Korean lighting market about the benefits of Zhaga specifications for smart cities and smart buildings.”



## DALI Lighting Awards 2022 open for entries

*Open to all commercial lighting projects that benefit from the use of DALI technology, the DALI Lighting Awards 2022 is now accepting entries, with a closing date of December 2, 2022.*

Piscataway, New Jersey, USA – The DALI Alliance, the global industry organization for DALI lighting control, announces the call for entries for the DALI Lighting Awards 2022.

With a closing date of December 2, 2022, the DALI Lighting Awards 2022 will highlight and recognize the best use of DALI control applications and solutions in lighting projects across the world.

### Categories

The DALI Lighting Awards 2022 will accept entries for all projects linked with DALI technology in the following categories:

- Architectural & Entertainment
- Healthcare & Education
- Industrial
- Infrastructure
- Outdoor
- Residential
- Retail & Hospitality
- Workspaces

“The DALI Lighting Awards 2021 attracted a wealth of excellent DALI-based projects from around the world, with a diverse range of applications,” said Paul Drosihn, DALI Alliance General Manager. “As DALI continues to evolve and add new features, we anticipate an even broader range of projects for this year’s Awards.” Winners of the DALI Lighting Awards 2021 can



be viewed here. ([www.dali-alliance.org/awards/2021/winners.html](http://www.dali-alliance.org/awards/2021/winners.html))

The awards aim to promote the benefits and features of DALI, the internationally standardized protocol for digital communication between lighting-control devices.

### Entry requirements

There is no entry fee for the Awards, and submissions are welcomed from all geographical regions. Entrants can nominate multiple projects, one per category, on an individual basis or as part of a team.

Entries can be submitted from any section of the supply chain (including lighting designers, electrical consultants, architects, installers and commissioning engineers among others). Please see

our website ([www.dali-alliance.org/awards2022](http://www.dali-alliance.org/awards2022)) for detailed entry criteria and a list of the information required.

### Judges

Our international judging panel includes lighting designers, editors from lighting trade magazines, and representatives from lighting organizations in the USA, Europe and China.

To submit a project, entrants are invited to complete the online entry form on the DALI Alliance website (<http://www.dali-alliance.org/awards2022>).

Entries for the Awards are open until December 2, 2022. The winners will be announced in February next year and will receive publicity on the DALI Alliance website and other channels.

## Design Plus Award powered by Light + Building: winners impress with sustainability and flexibility

Frankfurt am Main, Germany – Times of change are drivers for creative ideas and innovative solutions. The winners of the Design Plus Award powered by Light + Building stood out in the competition for their sustainability, flexibility and high quality design. The award ceremony took place on the first day of Light + Building Autumn Edition on 2 October 2022 in Frankfurt am Main.

The jury selected 34 products that received the “Design Plus” label and were displayed in an exhibition during the Light + Building Autumn Edition from 2 to 6 October. The design experts also awarded the coveted “Best of” label to five particularly outstanding products.

The awards ceremony for these five took place on the first

day of the leading trade fair for lighting and building technology on 2 October at the Design Plaza in Hall 3 in Frankfurt am Main. The Design Plus products were then also displayed in the immediate vicinity.

### Five “Best of” convince

The decisive criteria included design quality and ease of use in combination with energy efficiency and sustainable use of resources, as well as the technology used and integration capability. Among the five “Best of” is a sculptural object luminaire that captivates with fascinating glassblowing artistry. Also among the winners are a miniature system spotlight for miniature magnetic tracks and an infinitely adjustable rope



The jury exchanging views on what makes the submission stand out. From left to right: Ulrike Brandi, Ulrike Rahe, Jürgen Gaiser and Lutz Dietzold. Photo: German Design Council: Christof Jakob

hook. It convinced with its beauty and innovative operability. An endless anti-glare foil was particularly sustainable for the jury because it can be used in existing and old luminaires. The fifth prize winner is a smart solution that integrates, controls and monitors individual electricity consumers in private households.

In total, the jury received 113 entries from 73 companies from 19 countries. They covered all exhibition areas of Light + Building. “Despite the range of proposals, we were surprisingly unanimous in the selection and not least in the ‘Best of’ candidates,” said Professor Ulrike Rahe of rahe+rahe design, pleased.

Ulrike Brandi, ULRIKE BRANDILICHT, Lichtplanung

und Leuchtenentwicklung GmbH, also agreed: “The competition showed a nice variety of themes.” She explained what the winners were able to score with: “I see a trend towards luminaire systems that can be individually combined and changed with different accessories. Modular systems and luminaire families that can be combined are also interesting from a sustainability point of view. Exciting accessories from the supplier industry such as lenses, suspension systems that simplify installation and optical films allow clever luminaire designs. Luminaires in combination with acoustic functions are a more worked aspect.”

All entries were viewed and evaluated by independent jury members powered by Light + Building. These include:

- Prof. Ulrike Rahe, Managing Director rahe+rahe design GbR
- Ulrike Brandi, Managing Director ULRIKE BRANDI LICHT, Light Planning and Luminaire Development GmbH
- Jürgen Gaiser, Managing Partner Blocher GmbH

Design Plus powered by Light + Building is organised by Messe Frankfurt and the German Design Council and awarded by an independent jury of experts.

The list of winners and pictures of the award-winning products can be downloaded from the following link: [www.light-building.com/designplus](http://www.light-building.com/designplus).

The Light + Building Autumn Edition took place from 2 to 6 October 2022.

Further information at: [www.light-building.com](http://www.light-building.com).

## Zhaga launches Smart City Sensor Awards

Piscataway, NJ, USA – The Zhaga Consortium is launching the global Zhaga Smart City Sensor Awards to address the needs of many cities that have installed Zhaga-D4i certified streetlights. The awards encourage and recognise excellence in smart city sensors that can be installed on streetlights using the Zhaga Book 18 standard and are suitable for Zhaga-D4i certification. Sensor manufacturers, innovators as well as universities and students are encouraged to submit their applications by 16 December 2022.

Over the last 7 years, the Zhaga Consortium has created and further developed a new universal platform for streetlighting connectivity by offering Zhaga Book 18 titled “Smart interface between outdoor luminaires and sensing / communication modules” to the market. This platform allows streetlights to be the backbone of smart cities.

Streetlights are regularly positioned, secure, powered and in a great location for many sensing tasks and for communications. Zhaga’s Book 18 takes this further by standardising the

mechanical interface, intra-luminaire communication protocol and power budget for control devices. Zhaga also creates a new market opportunity for smart city sensors. With over 200 families of Zhaga-D4i luminaires from some of the world’s leading manufacturers already certified, streetlights become the cheapest and most practical way for city-wide deployment of smart sensors.

Zhaga Book 18 brings standardisation to sensors that one might wish to install on streetlights. The D4i protocol brings common communication. The Zhaga-D4i program, supported by logo use, offers the comfort of a global certification regime. The relatively recent Book 18 Edition 3 also opens up this opportunity to those parts of the world that are more comfortable with ANSI/NEMA-based lighting controls, yet who still wish to add Zhaga-based smart city sensors to streetlights.

Commercial participants who win an award will receive international public recognition via an article in a leading lighting publication and via Zhaga social media channels. They



will also be entitled to make specific reference to the awards in marketing material. Students and researchers from recognised educational institutions are eligible for a 2000€ prize. Runner-ups will receive a digital certificate.

Smart city sensors under the following categories: mobility, climate, pollutants, sound, lighting controls, multi-sensors, innovation and research, can be submitted to the international jury before 16 December 2022. The winners will be announced in February 2023.

The Zhaga Smart City Sensor Awards are explained in detail here: <https://www.zhagastandard.org/zhaga-smartcitysensor-awards.html>.

## Ayrton Eurus Profile proves the versatile solution for Hope Church in Singapore

Singapore – Ayrton is delighted to see Hope Church in Singapore invest in a further shipment of Eurus Profile luminaires through its exclusive distributor for Singapore, Total Solution Marketing. The new fixtures will complement the Church's existing stock of Eurus Profile that were first purchased in 2021.

Part of Ayrton's 6 Series, Eurus Profile is its first multi-function profile luminaire to be launched under the new SLIM-21™ programme for miniaturising fixtures and reducing their weight, and boasts optics specifically developed for applications requiring perfect image reproduction.

Mr. Steven Yeoh, Technical Director at Hope Church, explains how they came to choose more of this particular fixture, and how the fixtures will be used at the Church: "Hope Church Singapore organises various events within our 1400-seater The Axis Auditorium. Our programme ranges from small scale musicals to contemporary live band concerts. We chose to add three more Eurus Profile fixtures because we consider them to be great value for money considering the excellent performance they give. Also, we know Ayrton to be a reputable brand and we have received consistently good post-sales and technical support from TSM for many years."

In this instance the Eurus Profile fixtures are mounted on

a flybar 9 metres above centre stage to provide extra lighting effects and to complement the Church's four existing Eurus Profile units.

"We decided on a repeat order of these fixtures because we found them very easy to set up and very powerful," continues Mr Yeoh. "We particularly like the intense output which is maintained even when adding the prisms or any of the plethora of gobos. We were impressed by the range of gobo, prism and animation wheel options which we can use to match our motion graphics video LED wall, and found them easy to manipulate in real time to suit the atmosphere of the event."

"Eurus Profile works perfectly for us in the church environment, because of its versatility and the benefit of it having all the feature sets required for either a profile spot or a wash fixture. They are exactly what we need and perform really well."

"We are excited and grateful to Hope Church with their repeat investment, for trusting and acknowledging the quality and performance of Ayrton Eurus Profile," comments Terence Yee, from Total Solution Marketing. "We are thankful to see more Ayrton fixtures in the local House of Worship community."



Photos courtesy of Hope Church.

## LiteNordic new Elation distributor for Sweden, Norway and Denmark



From left to right: Johan Colmeus, COO, LiteNordic; Frederik Afif, International Sales Manager, Elation; and Espen Bechmann, Sales Director, LiteNordic.

California, USA – Elation Professional is pleased to announce that Scandinavia’s leading distribution company for dynamic lighting, LiteNordic, will take over distribution of Elation Professional and Obsidian Control Systems products in Sweden, Norway and Denmark effective 15 September 2022.

LiteNordic is the foremost entertainment lighting provider in Scandinavia with an exceptional reputation for quality and service. The company maintains outstanding local representation in each country with a proven customer partnership strategy that works and skilled personnel with years of industry experience. The company’s pan-Nordic approach and alignment across borders provides a host of cooperative benefits and efficiencies, resulting in an overall higher level of customer service.

“This is another big step forward for Elation and we are extremely excited that LiteNordic will be representing Elation and Obsidian in this important growth region,” stated Frederik Afif, International Sales Manager at Elation and company representative for Scandinavia.

“LiteNordic has the qualified personnel to cover Elation’s wide product range and the capacity and ability to handle the growth in demand for our products on both the lighting and control side. This is about expanding the possibilities for the customer and fulfilling their needs and LiteNordic’s customer reach and service is second to none. We are thrilled to be teaming up with them.”

LiteNordic has served as a distributor of lighting products since 2018 with a team of industry veterans that goes back many years. On the lighting control side, LiteNordic personnel’s years of experience with the former Martin M-Series, now Obsidian Control Systems, opens up for a great deal of opportunity and continued success with the platform.

Espen Bechmann, LiteNordic Sales Director, stated, “We are excited to have Elation onboard and are confident that the Elation and Obsidian brands will be a great complement to our portfolio. Elation’s extensive product line allows us to broaden our portfolio and offer our customers a one-stop shop when it comes to dynamic lighting and control. The complementary strategy is a real win-win and we are convinced that this partnership will grow our business significantly.”

LiteNordic and Elation both maintain an approach to the market in which customers are partners and colleagues treated more like family. “We like the family aspect we feel with Elation,” Espen continues. “It’s a personal approach where there’s also an element of fun in doing business, and that matches our own style well. We really take care of our customers and that fits with Elation’s spirit of customer service.”

Also instrumental in shaping the new relationship with LiteNordic was Elation International Sales Manager Jonas Stenvinkel, a veteran of both the Scandinavian and wider global lighting market. He has had a relationship with LiteNordic personnel that goes back many years and his familiarity with LiteNordic and experience and connections in the region will benefit the partnership greatly. “LiteNordic has hired the best and most experienced people in our industry in each country and their reputations are outstanding,” he states. “Teaming up with them presents a great opportunity for us in a growing and mature market and will be a key step in expanding the Elation brand in the region.”

The distribution agreement with LiteNordic supplants any other Elation distribution agreements in Sweden, Norway and Denmark. Elation has worked under full transparency with its distributors and thanks them for their dedication and promotion of the Elation brand in the region.

## Fraunhofer IBP study confirms the performance of Dynasolis™ human centric lighting solution

Tokushima, Japan – Nichia, the world's largest LED manufacturer and inventor of high-brightness blue and white LEDs, has commissioned the Fraunhofer Institute for Building Physics IBP, to analyse its Dynasolis solution. The solution consists of a combination of Nichia's cyan-coloured Azure LED and the multiple award-winning H6 LED family, which can adjust both colour temperature and melanopic illuminance. Dynasolis can be adjusted within a colour temperature range of between 2700K (with little to no cyan) and 10000K (with a larger share of cyan).

The Fraunhofer IBP carried out comparative tests between standard LEDs (2700K, 4000K, and 6000K, each with a CRI 83+) and the Dynasolis solution at colour temperatures of 2700K, 6000K, and 10000K (Fig. 1). The tests were designed to analyse the cognitive and psychological effects of different light colour temperatures and spectrum on approximately 35 test subjects per test series, which included evaluating how the light can impact alertness, attention, and relaxation.

### Inclusion of cyan increases attention

The Stroop-Task, a commonly used attention task, was carried out to evaluate the different effects of the standard LEDs and the Dynasolis solution on attention. Here, the subjects were asked to read e.g. the word "green" but written in red. These tests revealed significantly shorter reaction times of the subjects when conducted under the Dynasolis 6000K solution when compared to the standard LED with no cyan at the same colour temperature (Fig.2). There were

also clear differences between the Dynasolis variations with an increase of cyan, with subjects responding faster under Dynasolis 10000K than Dynasolis 6000K.

### Colour temperatures impact human reception

In the alertness test based on the AuReTim method where subjects were requested to press a button when they heard a beep from the headphones they wore, the study established that alertness is directly impacted by the colour temperature, regardless of whether it is the standard LED or Dynasolis solution. The test subjects were less alert when exposed to a colour temperature of 4000K when compared with exposure to a colour temperature of 6000K.

To test relaxation potentials, subjects were first placed in a room with standard LED 4000K, where they were allowed to acclimate to the light for five minutes. They were then placed under stress for 7 minutes with a cognitive task. This stress level was determined with a PANAS (Positive and Negative Affect Schedule) Test. This was followed by a five-minute relaxation phase under new lighting conditions (standard LED 2700K, versus the Dynasolis 2700K) with stress levels then being determined again. The results showed that the subjects were more relaxed under 2700K than under 4000K, regardless of the standard LED or Dynasolis.

### Dynasolis – Human Centric Lighting Solution of new era

The results of the Fraunhofer Institute for Building Physics

### Study Design

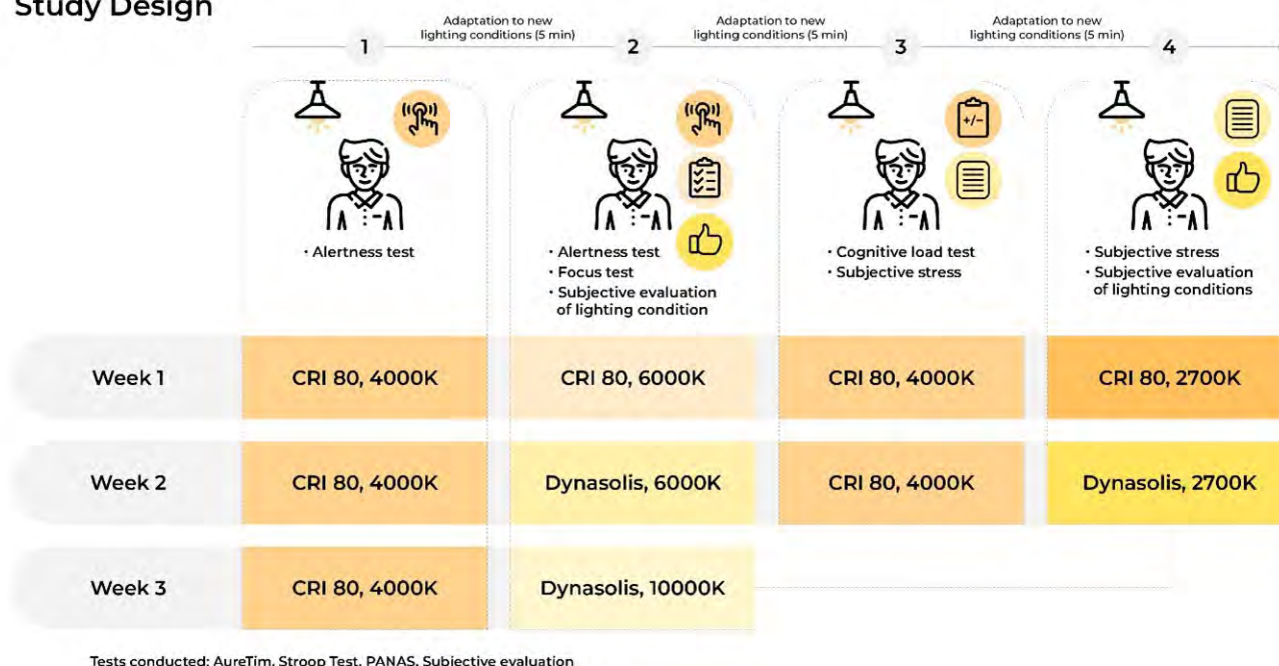


Fig.1 Fraunhofer IBP Study Design

## Stroop test: line color/word conflict

Friedman test,  $p = <0.0001$

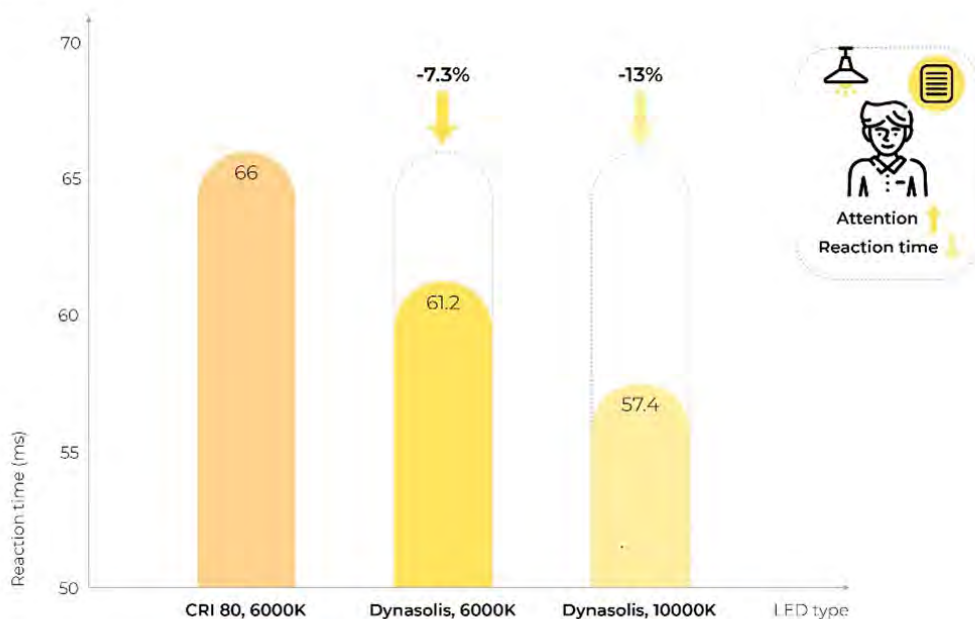


Fig.2 Results for attention (Stroop Task)

clearly show the advantages of the Dynasolis solution. The tunable Dynasolis can provide equal or better results in the different phases of human lighting needs than a variety of standard LEDs. This is due to the colour temperature tunability and melanopic illuminance tunability which is unique to Dynasolis.

In particular, the attention tests revealed significant improvements in reaction times of the subjects under Dynasolis. The good performance with regards to relaxation enables Dynasolis for the full spectrum of applications. For example, in hospitality applications guests can find anything from a good place to work to a place to recover after a long day.

“The results of the Fraunhofer Institute IBP’s tests confirm the goals we had when we developed the Dynasolis solution,” said Ulf Meiners, Managing Director of Nichia Europe. “We set out to develop a solution for working environments that follows the principle of Human Centric Lighting. Conventional Human Centric Lighting systems mainly work by changing colour temperature, the visual element. However, Dynasolis solution has been developed based on a totally new concept of changing both colour temperature and melanopic illuminance simultaneously to support human circadian rhythms. It is a Human Centric Lighting solution of a new era.”

## Elijah Anderson appointed new Nora Lighting Regional Commercial Sales Manager

Commerce, California, USA – Nora Lighting President and CEO Fred Farzan has announced the appointment of Elijah Anderson as the new Midwest Regional Commercial Sales Manager.

Elijah is a lighting industry professional with more than 10 years experience working in sales and lighting throughout the U.S. He is based in Wisconsin, and will oversee nine commercial rep agencies throughout his territory.

“Elijah will direct all commercial product introductions, sales, training and customer support, interacting with designers, specifiers, contractors and distributors. With our increased growth, we created another territory to expand our market space,” said Farzan.



Elijah Anderson. Photo credit: Nora Lighting





# CFSS upgrades with ETC's sustainable and modernized lighting solution

Hong Kong



Photo credit: The Chinese Foundation Secondary School



Photo credit: The Chinese Foundation Secondary School

*Hong Kong – A versatile, easy-to-use, and reliable lighting solution is important for education spaces as it enhances the mood of assemblies, and academic, cultural, or festive events.*

The Chinese Foundation Secondary School (CFSS) in Hong Kong recently upgraded its lighting package and rigging system in its School Hall. They embraced ETC products for their renovation and included Source 4WRD II, ColorSource Spot jr and 20 AV console, EchoTouch, and Prodigy FlyPipe to achieve a sustainable and modern lighting system for the double-decked space of school activities.

CFSS is a non-profit making DSS secondary school founded in 2000 as in Hong Kong. Being a forerunner in promotion of sustainable development, an Exemplary School of UNESCO Project on Education for Sustainable Development in China and award winner of numerous reputable SD projects, Source 4WRD II was selected by CFSS to replace the traditional tungsten profile and Fresnel fixtures in its School Hall, which is a multi-purpose venue. Traditional tungsten fixtures consume 650 watts of power per fixture, per hour while Source 4WRD II brings a significant reduction in power consumption as its LED light source has an impressive L70 rating while only consuming 175 watts of power per fixture, per hour. That's 70 percent less power consumed by Source 4WRD II without compromising on brightness. LED fixtures also provide a cooler surface



Photo credit: The Chinese Foundation Secondary School

which lowers the need for building cooling systems. The installation is simple and no steelwork is required. The upgraded fixtures will help CFSS achieve an eco-friendly lighting solution that aligns with the school's sustainable development goals.

Additionally, ColorSource Spot jr was selected as the spotlight on stage to add additional colour for performances. Spot jr is compact and designed for small to middle-scale venues like a school hall. The affordable fixture offers 5,700 lumens of brightness. The four-colour mixing system brings bright and vibrant colours that set the mood for school activities like plays and music performances.

To offer a lighting control system that is easy-to-manage, set up, and program for teachers and students, CFSS integrated a ColorSource 20 AV console and an EchoTouch Controller. This single lighting system now controls all the luminaires in the venue. EchoTouch provides a compact, powerful, and intuitive interface to program and control presets, while ColorSource 20 AV provides a simple, yet sophisticated

system for controlling fixtures. Users can also manage the console remotely with any mobile device using wireless access point connection. The integrated control enables a simple navigation and programming environment which makes the system accessible for everyone and will hopefully increase the students' interest in stage lighting design.

To access every section of the stage in the School Hall, CFSS replaced the hand winch light bars with three ETC's Prodigy FlyPipe hoists with Helix Cable Management. FlyPipe provides a fast way for end-users to plot new lighting rigs for any show. It is no longer necessary to access the light bars by lowering or raising them manually. The new rigging is controlled by QuickTouch with precise programmable preset positions. The intuitive operating system and safety features include SmartSlack, dual brake technology, and emergency stop, ensure a safe and reliable rigging system for students under the guidance of teachers to create a useful and artful stage environment.

The upgrade provides a sustainable and modernized theatrical system for



Photo credit: The Chinese Foundation Secondary School

CFSS. Teachers can enjoy the integrated lighting solution, with the advanced theatrical lighting technology while encouraging creativity in their student designers and technicians.

# Andreasturm office building in Zurich



Photo credit: Faruk Pinjo

Smart light for customised office areas.

When it comes to offices, many companies are asking questions like: Do we still really need so much space? Can the power consumption be optimised? And what do employees need in order to be able to concentrate on their work and generally feel good? A joint showcase project in the Andreasturm in Zurich by Zumtobel and Amstein + Walthert, one of Switzerland's largest consulting and engineering companies, provides some answers. It brings together both partners' expertise along the value creation chain of an office building, including the surveying of existing building data, the project design and implementation of the lighting and technical infrastructure, and the continuous analysis and improvement of processes.

"We want to learn more about the opportunities offered by the Internet of Things (IoT) for office management," says Ian Abegglen, Sales Consultant End User Digital/IoT & Finance Services at Zumtobel in Switzerland. "The aim is to integrate the right infrastructure into an existing lighting system, cost-effectively and quickly – for the benefit of building owners,

tenants and operators."

To this end, Zumtobel provided 19 high-quality EPURIA free-standing LED luminaires – all equipped with an integrated presence and brightness sensor and wirelessly controlled via Wireless IoT Mesh based on Bluetooth. In addition, six air quality sensors and a gateway were installed and integrated into the network. With the help of the gateway, the luminaire and sensor data are transmitted to a cloud-based monitoring and analysis dashboard that can be used to evaluate and analyse the acquired data at a glance. The dashboard uses a cloud-based IoT platform from Axonize, which Zumtobel calls the Smart Building Platform. Three asset tags also enable physical goods such as flip charts or printers to be identified and located.

## Improving the quality of indoor spaces with sensors

Air quality in the office has been extremely important since long before the pandemic. It also makes sense from



Zumtobel and Amstein + Walther are showcasing the office of the future in a smart building environment in the Andresturm office building in Zurich. It combines future digital applications such as asset tracking, improvement of the quality of indoor spaces and optimum utilisation of workstations based on sensors, thereby also improving building management. *Photo credit: Faruk Pinjo*



An asset tracking function enables office equipment such as flip charts and projectors to be located quickly. It is also possible to set up an indoor navigation system that allows people to find their way quickly and easily in an unfamiliar environment. *Photo credit: Faruk Pinjo*

the employer's viewpoint to ensure, literally, that there is a good atmosphere: employees will feel good and perform at their best in rooms that are pleasantly ventilated. With the help of Zumtobel air quality sensors, Amstein + Walthert can now measure CO<sub>2</sub> content, air humidity and temperature as well as VOC values. The latter refer to the

levels of volatile organic compounds in the air, which may be emitted by cleaning products, paints or adhesives, for example. The system sends an alert when certain limits are exceeded or not reached, and action is required.

A real-life example shows that smart building monitoring pays off, particularly when it comes to employee

health. "After a large-scale cleaning of the building, the VOC values were too high – and we were able to search for the cause together with the cleaning service provider," says Ralph Schmid, Senior Project Manager Consulting Real Estate/Facility Management at Amstein + Walthert. Thanks to the documented increase in the system, it was possible to ventilate quickly and remove the unwanted vapours. In short: "Smart building monitoring also allows us to identify environmental factors that you can't see, smell or perceive directly."

### Getting the best use out of workplaces

With home office regulations still in place at many companies, it is no longer the norm for all employees to be in the office at all times. The EPURIA luminaires from Zumtobel serve as sensors and data points. They automatically detect presence and ambient light and dynamically adapt their light output accordingly. This not only saves energy, but also provides Amstein + Walthert with information about which areas are frequented how often: a database that can be used to reliably estimate future space requirements and to increase the efficiency of spaces.

"Demand is coming particularly from companies who need a lot of space for their employees," says Ian Abegglen from Zumtobel. "The current rule of thumb is that 0.8 desks are needed per employee. Due to increased digitalisation and established home office concepts, this has changed significantly. Now companies need to find out how much space they actually need in the light of these new work models. Our surveys help them decide whether and how they will use their office areas in the future."

### Data as the starting point for further applications

Using the smart building infrastructure, a continuous energy monitoring system can be created or a reservation system can be set up for workplaces and meeting rooms, for example. Presence data can also be used to set up a smart cleaning system, in which only the workplaces or areas that have actually been used are cleaned. And with the help of the asset tracking function, office equipment such as flip charts or projectors can always be located. It is also possible to set up an indoor navigation system that allows

people to find their way quickly and easily in an unfamiliar environment.

According to Ralph Schmid, the important question for Amstein + Waltherth was whether the information from the building infrastructure could also be easily transferred to downstream platforms such as booking systems. “Our customers want to remain in possession of their data – and be able to use it whatever the platform. We have been able to achieve this thanks to Zumtobel’s infrastructure.”

### From digital twin to real benefit

In order to integrate the showcase as seamlessly as possible into the ongoing office operations in the Andresturm, Amstein + Waltherth kept its employees fully updated at all times. “Communicating well was very important to us in helping to keep our colleagues on board,” says Senior Project Manager Ralph Schmid. After the installation, operations continued smoothly: “It felt as if that’s the way it had always been.”

The basis for Zumtobel’s installation was a 3D scan of the premises: using a 3D scanner, Amstein + Waltherth scanned the entire floor and produced a three-dimensional digital model of the building (BIM model). The model then served as a starting point for Zumtobel’s project design, helping them find the best positions for the sensors and luminaires. Before the new building infrastructure was approved for use in August 2021, the lighting designers from Reflexion AG inspected the project design in the model to ensure, for example, that brightness requirements and standards had been met.

### One system, numerous advantages: Leveraging potential with smart building infrastructure

The use cases show only one small aspect of the overall benefit of a smart building infrastructure. “Our concept pays off at all levels,” says Ian Abegglen from Zumtobel. “Employees benefit from an optimal work environment and convenient digital applications such as workplace reservation via app. Building owners and managers can operate with increased energy efficiency and cost savings. In light of the EU Green Deal – the EU-wide aim of becoming climate-neutral by 2050 – this is becoming increasingly important.” There are also benefits for real estate service providers:



For the showcase, Zumtobel provided 19 high-quality EPURIA free-standing LED luminaires – all equipped with an integrated presence and brightness sensor and wirelessly controlled via Wireless IoT Mesh based on Bluetooth. In addition, six air quality sensors and a gateway were installed and integrated into the network. *Photo credit: Faruk Pinjo*



Employees benefit from an optimal work environment and convenient digital applications such as workplace reservation via app. Building owners and managers can operate with increased energy efficiency and cost savings. *Photo credit: Faruk Pinjo*

remote monitoring enables technical maintenance work or building cleaning to be planned and invoiced as required.

“Our collaboration shows that the state-of-the-art lighting solutions of today are digital and IoT-ready,” sums up Ian Abegglen from Zumtobel. “They make lighting and the building environment measurable and

qualifiable, offering enormous potential for improvements.” Now that the test phase has been completed, Amstein + Waltherth and Zumtobel are making their combined expertise available to interested companies. After all, there is still some potential to be tapped with the help of digital applications throughout the building life cycle.

## Cree LED introduces cutting-edge XLamp® Element G LEDs with the industry's broadest range of colours

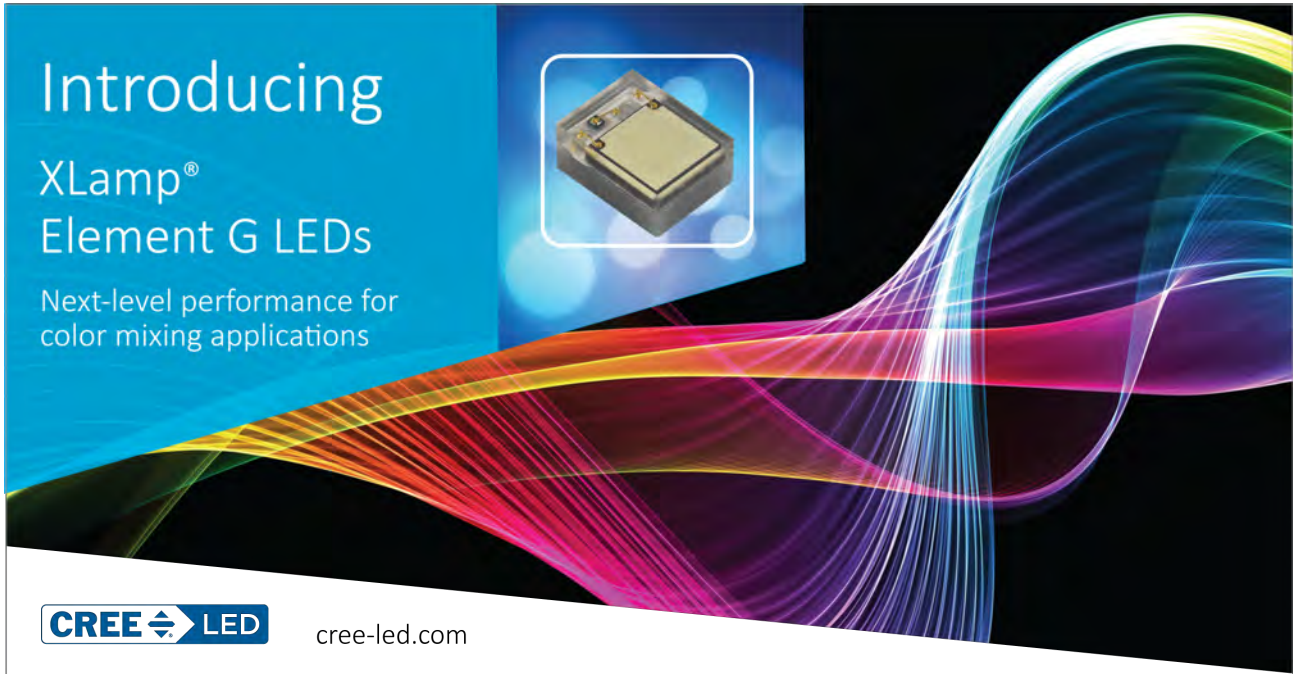


Photo courtesy of Cree LED.

Cree LED, an SGH company recently announced the launch of XLamp® Element G LEDs, delivering a new product class with unmatched light output and efficiency for LEDs of this size. The XLamp Element G LEDs are the latest in Cree LED's broad portfolio of lighting solutions enabling maximum light output and optical performance with new levels of precision and control.

Expanding on Cree LED's technology breakthroughs, the XLamp Element G LEDs provide next-level performance in colour mixing applications:

- New performance class delivering nearly 3x the light output of the XQ-E and 9x the lumen density of XP-E2
- Broadest range of colour options available in the industry
- No-compromise package design with minimal LED chip-to-edge spacing featuring a large, electrically isolated thermal pad and ESD protection

The XLamp Element G LEDs are optimized for multicolour directional lighting products for indoor and outdoor directional, architectural and entertainment applications.

"We continue to lead the industry by challenging assumptions about what's possible with LED technology. Our XLamp Element G LEDs deliver a new standard," said Cree LED President, Claude Demby.

"Customers have been asking for the next flagship colour platform and we've delivered – providing more colour options and better control than ever before. XE-G LEDs deliver an innovative building block approach to lighting system design, providing an entirely new performance standard for this category. We are eager to see our customers implement the XLamp Element G LEDs in their next generation products."

The Cree LED team featured XLamp Element G LEDs in multiple demonstrations at LightFair 2022 in Las Vegas from June 21-23, 2022.

### XLamp® Element G LEDs: Broadest Range of Color Options

White <b>WT</b> Cool					White <b>WT</b> Neutral	White <b>WT</b> Warm	Direct <b>HR</b> 650-670 nm
Direct <b>VL</b> 400-420 nm	Direct <b>RY</b> 450-460 nm	Direct <b>BL</b> 460-475 nm	Direct <b>CY</b> 490-510 nm	Direct <b>GR</b> 520-535 nm	Direct <b>AM</b> 585-595 nm	Direct <b>RO</b> 610-620 nm	Direct <b>RD</b> 620-630 nm
	Phosphor <b>PB</b> Blue	Phosphor <b>PC</b> Cyan	Phosphor <b>PL</b> Lime	Phosphor <b>PA</b> Amber	Phosphor <b>PO</b> Red-Orange	Phosphor <b>PR</b> Red	
		Phosphor <b>PM</b> Mint	Phosphor <b>PY</b> Yellow				

CREE LED

Photo courtesy of Cree LED.

## Exciting new decorative lighting range from Inter-lux

Baltimore, Maryland, USA – Habitat is a colourful collection of luminaires suitable for residences, offices, restaurants and hotels.

Inter-lux has provided innovative commercial lighting solutions for over 20 years. To meet an increasing demand for unique and affordable home and hospitality lighting, Inter-lux is pleased to announce the addition of Habitat, an exciting new range of outdoor luminaires created by IP44.DE and indoor luminaires designed and built by Stilnovo.

IP44.DE is a 25-year-old German company behind a variety of modern designs that will bring light and style to outdoor settings. All options are powered by batteries and USB cables and two are equipped with solar panels as well. IP44.DE products are easily portable and some include built-in handles. Prices in the exterior collection range from \$261 to \$595 and IP44.DE products are available to ship now.

Stilnovo, a brand owned by Linea Light, the Italian partner of Inter-lux, offers a wide range of interior lighting products for Table, Floor, Suspension and Wall/Ceiling applications. Most pieces were designed in the 50's, 60's and 70's, lending authenticity to these retro-looking luminaires. With a variety of colour choices and prices ranging from \$209 to \$2850, this versatile range will enhance both personal and professional habitats. Stilnovo products will be ready to ship in Fall of 2022.

"Lighting is capable of more than just illumination. Habitat luminaires were designed to add colour and personality to any space," said Mark DeVries, CEO.



## ILDL unveils new Lumenpulse products in its portfolio



Photo credit: Lumenpulse



New Delhi, India - ILDL has introduced two brand new products by Lumenpulse to their growing list of brand collaborations – the Lumenfacade Nano and Opticolor, aiming to deliver superior illuminating solutions that are functional, user-centric, and tailored to individual needs.

Lumenpulse, a leading innovator and manufacturer of high-performance, architectural LED-based lighting solutions, has introduced new features for their linear, indoor / outdoor favourite, the Lumenfacade Nano and added the unique proprietary technology, Opticolor, to their colour-changing projector products portfolio.

### Lumenfacade Nano

Lumenfacade Nano, the minimalist-designed fixture, has enhanced performance, new wattages, CRI 90+ colour rendering, and multiple 3G vibration rated options giving specifiers a small-scale premium fixture with full-scale features. The durable Lumenfacade Nano's flexibility has increased to

meet even more application needs. With its 3G vibration-rated options, it can be used on bridges and pedestrian walkways. In addition, the Lumenfacade Nano's quick-joining system simplifies installation, allowing an instant connection.

### Opticolor

On the contrary, the Opticolor technology, which is patent-pending, mixes colour at the source within the LED optic, allowing for ultra near-field colour blending, exceptional quality of light, and unrivalled colour consistency and uniformity. The proprietary Opticolor technology gives you the colour you want within inches of the fixture's surface. Thanks to tight binning and working within a 5nm variance, it provides a consistency of colour that blends seamlessly with other Lumenpulse products and applications. With exceptional colour rendering and blending, the luminaires boasting Opticolor technology are ideal for atriums, theatres, and lighting for surfaces and facades.

## Zytronic showcases an array of exciting Electroglaz™ demos that capture the imagination at Light + Building

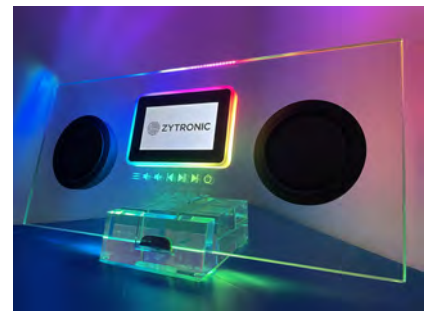
Newcastle, UK – Zytronic showcased its proprietary Electroglaz™ technology at this year's Light+Building. Visitors to the stand (Hall 9.0, Stand D09) were able to operate first-hand a range of technical demonstrations that depict snippets of possible use cases for Zytronic's innovative power transfer technology that delivers low voltage through a transparent glass panel without visible wires or cables.

Setting the scene, there was an old-school science experiment with an LED lightbulb revealing how the Electroglaz™ technology works. Users of this demonstration can flip the Frankenstein-style light switch plate to turn the lightbulb on and off, with multimeters showing the voltage and current levels passing through the vertical glass panel with no visible cables or wires to the bulb - they can even take

out the bulb to check that there are no hidden tricks.

Also on the stand was a high-end Hi-Fi system demonstrating how the Electroglaz™ technology can simultaneously power a set of floating Bluetooth® speakers and an LCD display transmitting data through a wireless Bluetooth® connection. In addition, the system integrates Zytronic's ZyBrid® projected capacitive touch technology with carved features on the surface of the glass to provide a tactile feel for users to adjust the volume, pause, and so on.

Other demonstrations that help stimulate the endless possibilities of where the Electroglaz™ technology can be used included an illuminated shelving unit – the type one may see in a luxury department store, museum or jewellery shop, displaying products in their premium state without the clutter of wires. There was also an illuminated



mirror with lightbulbs plugged into its perimeter that can be individually or collectively controlled wirelessly via Zigbee® communication using a convenient mobile app. Similarly, a halo-shaped glass chandelier, suspended from the ceiling via piano wires, gave designers a taste of what they can achieve using this technology – from novelty photobooths or high-tech huddle rooms to spinning logos, the possibilities are endless.

## ODELIC launches new designed fixture with function called AQUA2



SHIMO Pendant Light. Photo credit: ODELIC



Yuki Pendant Light. Photo credit: ODELIC



SHIZUKU Pendant Light. Photo credit: ODELIC

Tokyo, Japan – ODELIC is a leading lighting manufacturer in Japan. Since entering the lighting business, ODELIC has introduced a wide range of products with various designs.

In the recent years, ODELIC has been developing products not only with a unique design, but to have the latest functions together. In this opportunity, ODELIC would like to introduce one of its designed fixtures with function which is called, AQUA2.

AQUA2's design concept's idea was taken from a very familiar material, water. The 3 designs in AQUA2 series are all expressing the different faces which water shows in different seasons. AQUA2 is also, dimmable and tunable white (2700 - 6500K) which is its hidden function behind the design. The dimming and tuning can be controlled by the latest bluetooth communications. Which would add a different face to each of its 3 designs.

### ODELIC targets to make AQUA2 to be easy to handle and maintain.

Acrylic have been selected as the shade's material by developing a special forming skill. This new skill has helped ODELIC achieve a glass like transparency which was essential from its design concept. And also, have helped AQUA2 to be much economic and easy to handle. From the maintenance point, the shades of the walllights are removable.

### ODELIC have also selected detachable GX53 flat lamps for the light source.

GX53 bulbs holder had developed as the next generation standard for LED lamps. ODELIC focuses on GX53 flat lamps for luminaires with detachable bulbs.

#### 1. SHIZUKU (water drops)

"Shizuku" means water drops in Japanese. The 2 layer with an empty space structure gives Shizuku the waterdrop image. The outer thick transparent layer shows a unique lens effect when light transmit. On the other hand, the inner translucent white shade softens the atmosphere by cutting excess glare. The space between the 2 layers makes it possible to see the background through the fixture. This combination creates an

waterdrop like effect to "Shizuku".

- 1) SHIZUKU Pendant Light (model number: WP252665BR) 6.3W(GX53) / 119 x H121mm / 0.8kgs
- 2) SHIZUKU Wall Light (model number: WB255358BR) 6.3W (GX53)/ W150 x L125 x H95mm / 0.6kgs

#### 2. SHIMO (winter frost)

"Shimo" means frost (needle ice) in Japanese. "Shimo" is formed by a 2 layer shade as "Shizuku". The random ribbing like pattern on the outer transparent shade expresses needle ice. The needle ice pattern is formed by a special mould pattern and resin forming skills. Which causes an unique swaying like lighting effect. The delicate design and lighting effect does not appear too strong. Which is making the product suit a wide range of interior designs, from traditional to modern.

- 1) SHIMO Pendant Light (model number: WP252665BR) 6.3W (GX53) / 123 x H151mm / 0.7kgs
- 2) SHIMO Wall Light (model number WB255358BR) 6.3W (GX53) / W200 x L120 x H86mm / 0.6kgs

#### 3. YUKI (snow)

"Yuki" means snow in Japanese. As like the other 2 designs, "Yuki" is formed by 2 layers, transparent & white translucent. The outer transparent layer is given matt surface by texturing and sunblasting. The inner shade's milky white appears from under the outer matt shade.

### Giving a three-dimension like impression.

This combination creates the white but also, transparent fuzzy soft image. As like the snow which have silently and softly piled.

- 1) YUKI Pendant Light (model number: WP252788BR) 6.3W (GX53) / 130 x H94mm / 0.7kgs
- 2) YUKI Wall Light (model number: WB255358BR) 6.3W (GX53) / W171 x L127 x H85mm / 0.5kgs

ODELIC released e-catalogue "Samurai Lighting" at their website.

## Modular NX1™ console system from Obsidian offers complete ONYX lighting control experience



**L**imburg, Netherlands – Following a successful launch at the Prolight + Sound tradeshow in Germany in April, Obsidian Control Systems is pleased to announce availability of the NX1™, an ultra-compact yet full-featured lighting controller designed to handle a huge variety of shows using the intuitive ONYX™ lighting control platform. The NX1 also features an expandable playback wing (NXP™) along with a 10-digit keypad (NX K™) that combined with the NX1 creates an even more powerful and flexible console.

Designed for smaller to medium projects where an intuitive console is needed without a PC, the NX1 will be valued by rental companies and the mobile lighting programmer alike. The NX1 joins the compact yet fully-integrated NX2™ and Obsidian's flagship NX4™ under the ONYX lighting control platform.

### Full ONYX Operating System

The NX1 is a small yet powerful console where Playback and Programming interfaces are fully supported with no compromises. Utilizing the full ONYX Operating System, the NX1 offers a slate of professional features like a high-brightness 10.1" HD multi-touch screen plus 1 HDMI output for one additional external touch monitor that allows for additional customizable views (optional touchscreen monitor not included).

Included are 4 assignable parameter encoders; 10 full motorized playbacks with four freely assignable buttons plus an extra playback and function key hybrid array. A dedicated Master Go section rounds out the efficient front panel design.

Made of rock solid construction, the latest in industrial grade components like a powerful new Intel processor, high-speed NVMe SSD drive and 8GB of DDR4 RAM allow for fast boot times, instant operation and the ability to process 8 Universes right inside the console. With four DMX ports, a Gigabit network port for up to 8 Universes of Art-Net, sACN plus the ONYX X-Net protocol, the NX1 has ample connectivity and power for a wide variety of shows and applications. One additional touch monitor is supported for even more direct access at any time. Measuring only 298.5 mm x 636 mm x 71 mm (11.75 x 25 x 2.8 in.) and weighing a light 4.5 kg (9.9 lbs), the NX1 fits under one arm and is portable enough carry on commercial flights. Included items include an LED USB desk lamp, dust cover, USB 3.0 recovery drive and IP65 locking power cable.

### Expandable

The NX1 is expandable with the NXP™ playback wing with motorized faders and dedicated NX K™ keypad that on their own can operate as a PC wing. A simple magnetic alignment system allows attachment to either side of the NX1. The keypad and playback

wing are part of the ONYX platform and can be utilized with all other NX devices or ONYX on any PC system.

### NX P™

The NX P is a compact, motorized fader wing for the ONYX platform. The ideal expansion for any ONYX 1 console and ONYX PC systems, it replicates the full playback section of the NX1. Four integrated DMX ports provide instant connectivity to the lighting system. Multiple NX P wings can be connected to any ONYX console or PC system, expanding direct access with 20 playbacks at a time. The flexible button array can be mapped to playback control or powerful function keys.

The NX P replicates the layout and all functionality of the NX1 and NX4 console surfaces so all operation is seamless and intuitive. A simple magnetic alignment system allows attachment on any side of the NX1 console or NX K command pad.

### NX K™

The NX K is a small USB-powered control surface for ONYX. The ideal companion for the NX1 console and ONYX PC systems, it replicates the full keypad and command section of larger consoles. Four encoders complete the programming experience for fast and direct parameter access. A simple magnetic alignment system allows attachment on any side of the NX1 console or NX P motorized fader wing.

## Claypaky TAMBORA FLASH: A unique three in one trailblazer of a fixture to create instant impact

Following on from its successful range of LED bars introduced last year, Claypaky has now expanded the Tambora family further and introduces TAMBORA FLASH. It is the only hybrid fixture on the market that can act simultaneously as a strobe, wash and blinder, specifically designed with a modular approach for use in a linear array, to offer new creative opportunities to lighting designers.

The strobe section is based on two strips of very powerful white LEDs and a large beam angle aperture, capable of bringing a real impact of light into the show.

The blinder and the wash functions are obtained thanks to 4 large central RGBWW LED reflectors of 100W each, individually controllable in each function through the Advanced Layers Management. The presence of Warm White LEDs allows the typical “warm” effect typical of blinders. However, the blinder effect can also be obtained by using colored LEDs, for a more dramatic effect than usual.

Both strobe and blinder effects are so visually striking that they can be perfectly appreciated even in concerts and live events in broad daylight, even in bright sunlight!

Tambora Flash was conceived and developed with the idea of making several product units combinable horizontally and vertically, in order to obtain clusters that are conceptually like the line arrays of audio systems. Its core unit is suitable for smaller venues and this is contained in a modular design that can be quickly connected together to create larger units for use in big venues and stadiums.

Claypaky Tambora Flashes offers two quick coupling modes and the adjustment of each single fixture within the



cluster on a 30° angle, in order to adapt to every application. The advanced mechanics and the ease of combining matrix products make Tambora Flash a truly versatile and fun to use system.

Tambora Flash offers an IP66 degree of protection, which guarantees its ideal use in outdoor applications.

### Main features: -

- Static Hybrid strobe/blinder
- Light source: 4 RGBWW LED with reflector + Two lines of white LED strobe
- Advanced Layers Management (Background Color – Internal Shape – Pixel Mapping + Strobe)
- Pixel mapping and strobe splitted into 8 different areas per line
- Electronic linear dimmer, 24 bit and 5 curves
- IP66 rating
- CloudIO Ready: fully compatible with CloudIO

## ETC launches SolaPix 19 XT

Middleton, Wisconsin, USA – ETC introduces the High End Systems SolaPix 19 XT wash luminaire, an IP 65-rated SolaPix 19 designed specifically for indoor and outdoor events. It utilizes a weatherproof housing and sealed glass front lens to deter the ingress of dust, water, and other liquids.



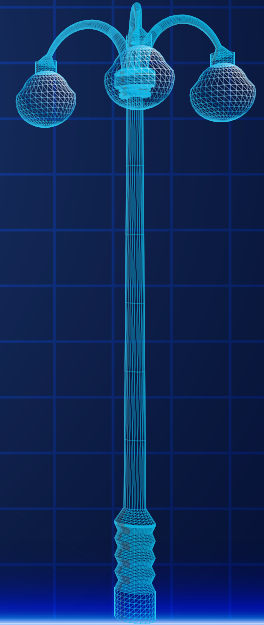
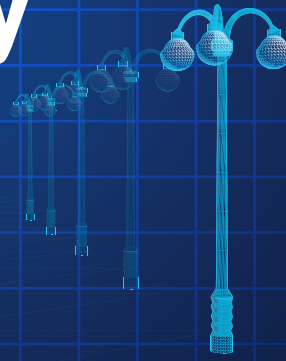
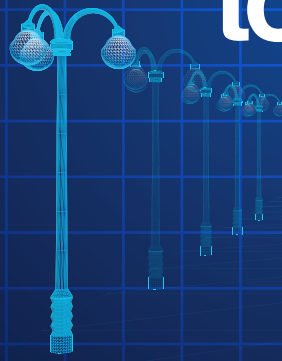
Photo credit: ETC

The SolaPix family takes the traditional concept of a pixel wash and pushes it to its maximum potential. With a wide variety of looks to help set the mood and steal the show, SolaPix features an additive LED, RGBW colour mixing system for extremely powerful saturated colours and tunable white control, a versatile 4.5° - 60° zoom range, FleX Effects Engine, and Pixel mapping on all models.

Automated Lighting Product Manager Matt Stoner commented, “The SolaPix family has given users around the world the opportunity to utilize a bright fixture at a great size and price. Now with the SolaPix 19 XT, we can take this popular fixture outside without concern for weather or environmental factors.”

Market Manager Tania Lesage added, “We are excited to add the XT model to the success story of our SolaPix family. This new fixture brings you high-quality looks as well as many options to mix in cutting-edge, eye candy visuals - in both indoor and outdoor settings. SolaPix 19 XT is not only an exceptional light, it is also a durable investment.”

# lighting today



Lighting Today is an architectural and entertainment lighting news portal which targets professionals in lighting industry including lighting designers, consultants, architects, interior designers, engineers, developers, estate management, event organisers and end users. We provide multiple platforms for our clients to communicate their target audience effectively. Scan the QR code below to access the quarterly digital magazine on our news portal and social media platforms.

**Scan QR code below to read our news.  
Sign up for free subscription.**



**Connect with us on social media!**



[www.facebook.com/  
LightingToday](https://www.facebook.com/LightingToday)



[www.twitter.com/  
LightingToday](https://www.twitter.com/LightingToday)



[www.linkedin.com/  
groups/3927350](https://www.linkedin.com/groups/3927350)



[www.instagram.com/  
lightingtodaysg](https://www.instagram.com/lightingtodaysg)



[www.issuu.com/  
lightingtoday](https://www.issuu.com/lightingtoday)

DESIGN ASIA 2022

ArchXpo 2022

FIRE & DISASTER ASIA 2022 SINGAPORE

SAFETY & SECURITY ASIA 2022 SINGAPORE



# Architecture & Building Services 2022

Sustainability In A Digital Built Environment

iFME INTERNATIONAL FACILITY MANAGEMENT EXPO 2022

LIGHTING ASIA 2022

WORK SAFE ASIA 2022 SINGAPORE



**16 - 18 November 2022**



Marina Bay Sands Singapore  
Sands Expo & Convention Centre | Halls B & C

**26 > 29**  
**JULY 2023**  
10.00AM - 7.00PM

**KLCC**  
KL CONVENTION  
CENTRE, MALAYSIA

An Event Of:  
**KLAF2023**  
KUALA LUMPUR ARCHITECTURE FESTIVAL

# **ARCHIDEX**<sup>®</sup>

THE 22ND INTERNATIONAL ARCHITECTURE, INTERIOR  
DESIGN & BUILDING EXHIBITION 2023, MALAYSIA

ASIA'S LEADING ARCHITECTURE  
BUSINESS EVENT

SCAN HERE  
for more info



Featuring:



Jointly Organised By:



[www.ARCHIDEX.com.my](http://www.ARCHIDEX.com.my)



# SUBSCRIPTION FORM

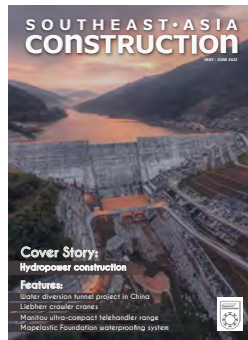
Email us at [info@tradelinkmedia.com.sg](mailto:info@tradelinkmedia.com.sg)

## PRINT

Please (✓) tick in the boxes.



Southeast Asia Building  
Since 1974



Southeast Asia Construction  
Since 1994

**1 year (6 issues) per magazine**

Singapore	SGD\$60.00
Malaysia / Brunei	SGD\$105.00
Asia	SGD\$155.00
America, Europe	SGD\$185.00
Japan, Australia, New Zealand	SGD\$185.00
Middle East	SGD\$185.00



Bathroom + Kitchen Today  
Since 2001

**1 year (4 issues) per magazine**

Singapore	SGD\$32.00
Malaysia / Brunei	SGD\$70.00
Asia	SGD\$85.00
America, Europe	SGD\$135.00
Japan, Australia, New Zealand	SGD\$135.00
Middle East	SGD\$135.00

## DIGITAL



### Lighting Today

is available on digital platform.  
To download free PDF copy,  
please visit:

<http://lt.tradelinkmedia.biz>

Lighting Today  
Since 2002



### Security Solutions Today

is available on digital platform.  
To download free PDF copy,  
please visit:

<http://sst.tradelinkmedia.biz>

Security Solutions Today  
Since 1992

**Personal Particulars**

Name: \_\_\_\_\_

Position: \_\_\_\_\_

Company: \_\_\_\_\_

Address: \_\_\_\_\_

Tel: \_\_\_\_\_ Fax: \_\_\_\_\_

E-Mail: \_\_\_\_\_

## IMPORTANT

Please commence my subscription in  
\_\_\_\_\_ (month/year)

Professionals (choose one):

- |   |  |  |  |
|---|--|--|--|
| <input type="checkbox"/> Architect        | <input type="checkbox"/> Landscape Architect   | <input type="checkbox"/> Interior Designer | <input type="checkbox"/> Developer/Owner |
| <input type="checkbox"/> Property Manager | <input type="checkbox"/> Manufacturer/Supplier | <input type="checkbox"/> Engineer          | <input type="checkbox"/> Others          |

I am sending a cheque/bank draft payable to:

**Trade Link Media Pte Ltd, 101 Lorong 23, Geylang, #06-04, Prosper House, Singapore 388399**

Co. Reg. No: 199204277K \* GST inclusive (GST Reg. No: M2-0108708-2)

Please charge my credit card (circle one): Amex / Diner's Club

Card Number: \_\_\_\_\_ Expiry Date: \_\_\_\_\_

Name of Card Holder: \_\_\_\_\_ Signature: \_\_\_\_\_



# ADVERTISE WITH US TODAY!

Email us at [info@tradelinkmedia.com.sg](mailto:info@tradelinkmedia.com.sg)



Scan to visit our website

